

MISSION DATA CARD

OPORD		Callsign		Mission		Date/Time		
021/2024		Rattler 5		Training		162000SEP24		
Task						Freq		
AO						133.5		
Departure				Recovery				
FYTTR THREE				STRYK				
#	Callsign		Pilot		IFF	TCN	LSR	NET

LOADOUT

A/A					GUN	100%	
A/G	10xAGM114K				CHF	30	
POD					FLR	60	
TKS					FUEL	50%	

TOLD

	Takeoff	Target	Joker	Bingo	Land
FUEL	1256				

AIRBASES

	Name		TCN	ATIS	GND	TWR	RWY	Elev	ILS
Dep	Nellis AFB		12X	270.1	275.8	327.0	21L	1850	109.1
Arr	Nellis AFB		12X	270.1	275.8	327.0	21L	1850	109.1

OTHER FLIGHTS

Callsign	Mission	Airframe	Freq	TCN	Grpld	Laser
Edelweiss 1	Training	1x F/A-18C	264.15	1/64	1	171X
AO		Task				
Nazgul 2	Training	3x C-101CC	261.35	1/64		157X
AO		Task				
Tiger 5	Training	4x F/A-18C	261.15	1/64		155X
AO		Task				
Nazgul 7	Training	4x F-15E	262.45	1/64		156X
AO	62A	Task	Buddy Lasing Training			
Edelweiss 2	Training	1x F/A-18C	264.25	12/75	1	172X
AO		Task	Departure & Arrival Training			

RADIO CHANNELS

#	Freq	Name
1		Flight/Squadron specific
2	289.4	Nellis Clearance Delivery
3	275.8	Nellis Ground
4	327.0	Nellis Tower
5	385.4	Nellis Approach/Departure West
6	273.55	Nellis Approach/Departure East
7	317.525	Nellis Control -- Sally
8	254.4	Nellis Control-- Lee
9	305.6	SOF Bullseye
10	343.725	EMERGENCY SINGLE FRQ
11	270.1	Nellis ATIS
12	360.625	Creech AFB Tower
13	250.1	HAVE QUICK 13
14	251.1	HAVE QUICK 14
15	252.1	HAVE QUICK 15
16	377.8	Blackjack
17	265.0	KC-135 AR-641A
18	360.8	KC-135MPRS AR-635
19	319.8	KC-135MPRS AR-625
20	300.05	KC-135 AR-231V

RAMROD

0	1	2	3	4	5	6	7	8	9
C	H	I	V	A	L	R	O	U	S

KTC 1400 C

	0	1	2	3	4	5	6	7	8	9
A	FEMH	OTL	ABN	CG	WD	JXR	QI	VY	KP	SU
B	QABN	IPY	FMU	KR	XO	HEV	CD	TG	LS	JW
C	NSQX	YLD	TFW	UH	EG	BRO	PM	CV	AJ	IK
D	VEML	UBK	SQH	GP	CR	XWI	FN	YJ	AT	OD
E	WRYA	IBM	SCD	GF	JH	OPV	TL	NE	UX	QK
F	YDRH	PNI	CJF	SE	QT	BVX	OU	WM	AL	GK
G	UCDF	TVJ	OQK	RI	GW	YLS	PB	MN	XA	HE
H	WOMY	UIJ	FSA	DH	QP	VLR	BT	KX	EG	CN
I	GTML	BEN	SFW	RC	AJ	VDX	HQ	UP	OI	YK
J	JLHI	RGK	SBF	OC	ED	XNM	PY	WV	QT	UA
K	KEUD	VAH	SLF	WP	XC	TNB	RG	IM	YQ	JO
L	QTAM	VUN	HRX	SB	LD	FJK	WE	PI	CO	YG
M	TWAE	UOC	GJV	LR	QX	PFN	BI	KM	DY	SH
N	CNTV	FJY	OHR	GD	WQ	KUE	LM	PX	IB	SA
O	KSQP	EDA	VFH	YR	CI	WBX	NO	LG	MJ	TU
P	NHVD	QGP	WFE	OB	JU	XLT	SA	MR	IK	CY
Q	STYJ	CWE	NUX	BM	VK	PRL	FH	AI	GD	QO
R	KICH	FSU	EPR	AD	XO	TBQ	GJ	NM	WY	LV
S	WCUG	POY	VTE	JH	SK	IMA	XD	NR	BL	QF
T	EOCW	JSY	UXT	BV	RN	MHK	IG	AD	FL	QP
U	VRQY	TGH	XNJ	OC	ML	SAD	UF	WP	KE	IB
V	EMBL	XND	VWP	AT	KS	QJF	RC	OY	IG	UH
W	DTMI	HOP	QWX	RU	LS	BAN	EG	JF	VK	CY
X	MWVA	JYX	UPT	BQ	IS	NRE	CF	HD	GK	OL
Y	SGDU	PFA	CQM	OL	YR	VTJ	IX	HN	KE	BW

NAVAIDS

Id	Name	Channel	Position	Elevation
BCE	Bryce Canyon	75	N3741.35 W11218.23	9040
BIH	Bishop	33	N3722.62 W11821.99	4114
BLD	Boulder	114	N3559.75 W11451.82	3650
BTY	Beatty	94	N3648.54 W11644.86	2925
CDC	Cedar City	120	N3747.24 W11304.90	5463
DAG	Daggett	79	N3457.75 W11634.69	1760
EED	Needles	99	N3445.96 W11428.43	650
GFS	Goffs	91	N3507.87 W11510.59	4019
GRL	Groom Lake	18	N3713.91 W11548.16	4475
HEC	Hector	74	N3447.83 W11627.78	1854
ILC	Wilson Creek	110	N3815.02 W11423.65	9318
INS	Creech AFB	87	N3635.20 W11540.12	3101
LAS	McCarran Intl	116	N3604.78 W11509.59	2142
LSV	Nellis	12	N3614.68 W11501.50	1864
MLF	Milford	58	N3821.62 W11300.79	4977
MMM	Mormon Mesa	90	N3646.16 W11416.65	2120
MVA	Mina	98	N3833.92 W11801.97	7860
OAL	Coale Dale	124	N3800.20 W11746.23	4800
PGS	Peach Springs	57	N3537.48 W11332.67	4754
TPH	Tonopah Muni	119	N3801.84 W11702.01	5330
TQQ	Silverbow	77	N3748.00 W11647.00	5500
UTI	St George	23	N3705.29 W11335.53	2871



RWY 3L-21R
 PCN 46 R/C/W/T
 RWY 3R-21L
 PCN 51 R/C/W/T
 2017

PAR	RWY	CAT	MINIMA		ARP	ELEV	Scale 1:35'500	
	21L	A B D E	2057 - 0.8 200 (200-0.8/1.6)	GS 3°	36° 14.060° N 115° 01.058° W	1857 [ft] 566 [m]	0 300 600 900 1200 1500 [m]	
	3R	A B D E	2057 - 0.8 200 (200-0.8/1.6)	GS 3°			0 1000 2000 3000 4000 5000 [ft]	
SRA	21R	A C D E	2257 - 1.2 350 (350-1.2/1.6)					
	3L	A C D E	2257 - 1.2 350 (350-1.2/1.6)					

RWY	TORA	TODA	ASDA	LDA	PSN	THR	ALS
21L	10051 [ft] 3063 [m]	11051 [ft] 3368 [m]	11051 [ft] 3368 [m]	10051 [ft] 3063 [m]	36°14.043' N	115°01.018' W	⊕
3R	10120 [ft] 3084 [m]	11120 [ft] 3398 [m]	11120 [ft] 3398 [m]	10120 [ft] 3084 [m]	36°13.029' N	115°02.038' W	

ATIS	NELLIS GROUND	NELLIS TOWER	NELLIS CONTROL	TACAN	ILS RWY 21L	NELLIS EAST	NELLIS WEST
270.100 MHz	275.800 121.800	327.000 132.55	317.525	LSV 12X	109.10 Mhz	384.400	385.000

FYTTR THREE DEPARTURE IFR CHART | VALID 2014 LAS VEGAS, NEVADA

ATIS
270.100
NELLIS GROUND
275.800
NELLIS TOWER
327.000
NELLIS CONTROL
317.525
NELLIS DEP/APP EAST
384.400
BLACKJACK
377.800

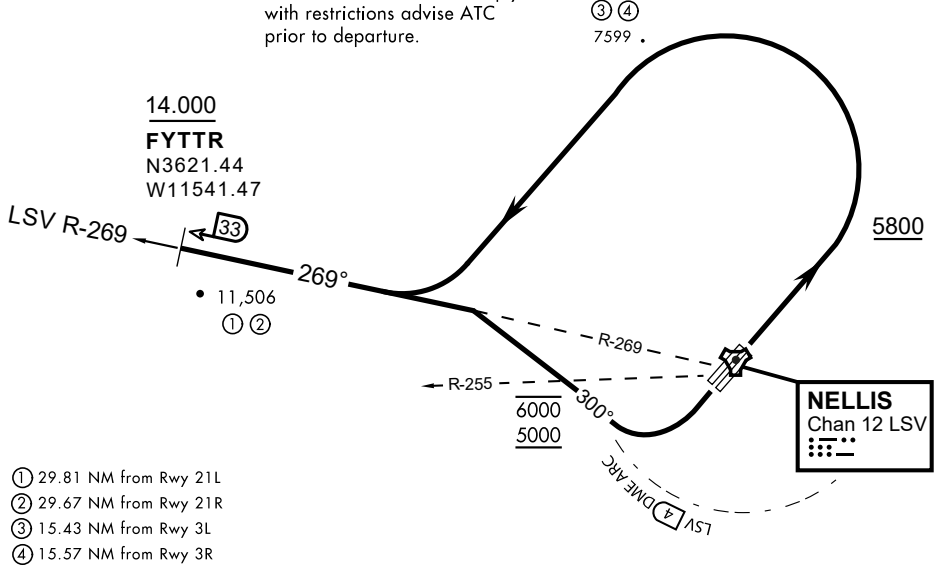


Rwy	Knots	60	120	180	240	300	360
3L (a)	V/V(fpm)	394	788	1182	1576	1970	2364
3R (a)	V/V(fpm)	392	784	1176	1568	1960	2352
21L (b)	V/V(fpm)	388	776	1164	1552	1940	2328
21R (b)	V/V(fpm)	390	780	1170	1560	1950	2340

Minimum Climb Rate

- (a) to 9300
- (b) to 13 500

CAUTION: If unable to comply with restrictions advise ATC prior to departure.



- (1) 29.81 NM from Rwy 21L
- (2) 29.67 NM from Rwy 21R
- (3) 15.43 NM from Rwy 3L
- (4) 15.57 NM from Rwy 3R

DEPARTURE ROUTE DESCRIPTION

TAKEOFF RWY 3L/R

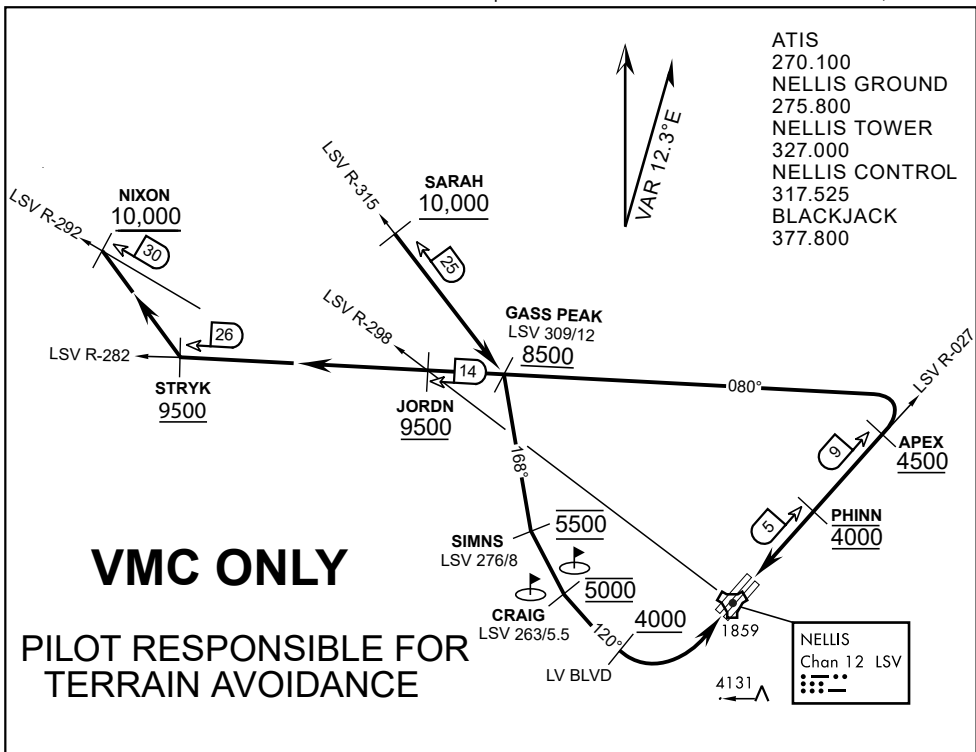
- Fly runway heading until reaching 5,800'.
- Then climbing left turn to intercept LSV TACAN R-269 outbound.
- Cross FYTTR at or above 14,000' or as assigned, then via assigned route.

TAKEOFF RWY 21L/21R

- Turn right to intercept LSV TACAN R-269 outbound.
- Remain within LSV 4 DME until joining LSV R-269
- Cross R-255 between 5,000' and 6,000'.
- Cross FYTTR at or above 14,000' or as assigned, then via assigned route.

NOISE ABATEMENT PROCEDURES:

Fly according Nellis Noise Abatement instructions as published



- ATIS
- 270.100
- NELLIS GROUND
- 275.800
- NELLIS TOWER
- 327.000
- NELLIS CONTROL
- 317.525
- BLACKJACK
- 377.800

VMC ONLY

PILOT RESPONSIBLE FOR TERRAIN AVOIDANCE

APPROACH ROUTE DESCRIPTION

APPROACH RWY 3L/R

Cross STRYK at or above 9,500' MSL, proceed direct GASS PEAK. Cross JORDN at or above 9,500' MSL, cross GASS PEAK at or above 8,500' MSL. Proceed direct SIMNS and cross at 5,500' MSL. Cross Las Vegas Blvd at or above 4,000' MSL then to 3,500' MSL for Initial. Remain within 4 DME if LSV on turn to final.

VFR STRAIGHT-IN RWY 3L/R

Depart CRAIG & descend to be at 3,000' MSL by Las Vegas Blvd. Do not descend below 3,000' MSL until within 5 DME of LSV or 4 NM of the runway on turn to final.

APPROACH RWY 21L/R

Cross STRYK at or above 9,500' MSL, proceed direct GASS PEAK. Cross JORDN at or above 9,500' MSL, cross GASS PEAK at or above 8,500' MSL. Cross APEX at or above 4,500' MSL then direct 5NM initial. Descend to cross PHINN at 4,000' MSL, Inside 5 NM descend to 3,500' MSL.

VFR STRAIGHT-IN RWY 21L/R

Cross APEX at 4,000' MSL. Descend to be at 3,000' MSL at PHINN. Descend to 3,000' MSL at LSV 027/5.

RANGE 63B EXIT

SOUTH: Via NIXON at or above 10,000' MSL, then direct STRYK.

EAST: Via SARAH at or above 10,000' MSL, then direct GASS PEAK.