

MISSION DATA CARD

OPORD		Callsign		Mission		Date/Time		
044/2024		Edelweiss 4		Training		232045OCT24		
Task						Freq		
AO						264.45		
Departure				Recovery				
FYTTR THREE				STRYK				
#	Callsign		Pilot		IFF	TCN	LSR	NET

LOADOUT

A/A						GUN	
A/G						CHF	
POD						FLR	
TKS						FUEL	

TOLD

	Takeoff	Target	Joker	Bingo	Land
FUEL	10803				

AIRBASES

	Name	TCN	ATIS	GND	TWR	RWY	Elev	ILS
Dep	Nellis AFB	12X	270.1	275.8	327.0	21L	1850	109.1
Arr	Nellis AFB	12X	270.1	275.8	327.0	21L	1850	109.1

SUPPORT**Tanker**

Callsign	TCN	Freq	ALT	TAS
SHELL 2	115Y	360.8	FL250	430
Pos	AR-635: MLF 260/127 (N3831 W11542)			

RADIO CHANNELS

#	Freq	Name
1		Flight/Squadron specific
2	289.4	Nellis Clearance Delivery
3	275.8	Nellis Ground
4	327.0	Nellis Tower
5	385.4	Nellis Approach/Departure West
6	273.55	Nellis Approach/Departure East
7	317.525	Nellis Control -- Sally
8	254.4	Nellis Control-- Lee
9	305.6	SOF Bullseye
10	343.725	EMERGENCY SINGLE FRQ
11	270.1	Nellis ATIS
12	360.625	Creech AFB Tower
13	250.1	HAVE QUICK 13
14	251.1	HAVE QUICK 14
15	252.1	HAVE QUICK 15
16	377.8	Blackjack
17	265.0	KC-135 AR-641A
18	360.8	KC-135MPRS AR-635
19	319.8	KC-135MPRS AR-625
20	300.05	KC-135 AR-231V

RAMROD

0	1	2	3	4	5	6	7	8	9
M	I	S	T	A	K	E	N	L	Y

KTC 1400 C

	0	1	2	3	4	5	6	7	8	9
A	XGJI	OHS	DKB	ER	AN	TVQ	CU	ML	YW	PF
B	DIAB	LFY	HKM	XT	RJ	NEW	OP	QV	SC	GU
C	JCNL	UBV	OXF	SF	WT	YKD	HE	QG	IM	RA
D	SMFJ	EOD	NKY	TH	GQ	BLV	CR	IP	WA	XU
E	GEOW	KMI	NSQ	TH	VF	UCA	YD	XJ	PR	BL
F	KXGS	HYU	ROF	NB	LD	EJV	PC	QA	TW	IM
G	EFLH	MGC	APV	UN	DX	JIT	KW	OY	QR	SB
H	SEOG	YLQ	FDI	TN	XK	VCJ	BR	HU	MA	WP
I	XYTF	QPD	HIO	VJ	KW	CNA	RE	SB	LM	UG
J	OLCP	AQT	HMG	YB	KU	ERD	VW	IF	SJ	NX
K	RSUP	TLQ	BVD	HF	JW	ECN	YI	XG	MO	KA
L	YJTW	QCU	AMV	EX	FB	DRN	SO	LP	HI	KG
M	WTBN	EKX	LFD	HY	SU	MCJ	RV	OI	PQ	AG
N	YLAN	PVM	BCX	SW	GT	RDH	FE	OI	QU	KJ
O	YMNL	BWP	TDU	AX	KV	HRO	QS	CI	JG	FE
P	AUTJ	BFQ	XVG	MH	SI	OKR	NP	WY	DL	CE
Q	FDJM	YQS	HCA	EG	UO	BRK	IN	PV	TL	XW
R	NBRP	UKF	LOS	GT	CJ	WME	XQ	IY	DV	HA
S	ROTG	LQF	HIU	XY	WM	BPN	SC	ED	AJ	KV
T	CKSM	BAX	NEY	GP	TR	WUD	FI	JL	VH	OQ
U	QTAB	YJU	FGK	LP	IM	CNE	VH	DR	XO	SW
V	BGYQ	UJM	TCL	VK	DX	WSA	RF	EO	HI	PN
W	MATQ	HBL	WPR	YO	EC	NDU	JK	XV	IG	FS
X	TEHF	OLU	KRQ	AW	CG	SMB	DY	VX	IJ	NP
Y	IBWD	OFE	MQR	TY	SL	JUN	GX	VA	HC	PK

NAVAIDS

Id	Name	Channel	Position	Elevation
BCE	Bryce Canyon	75	N3741.35 W11218.23	9040
BIH	Bishop	33	N3722.62 W11821.99	4114
BLD	Boulder	114	N3559.75 W11451.82	3650
BTY	Beatty	94	N3648.54 W11644.86	2925
CDC	Cedar City	120	N3747.24 W11304.90	5463
DAG	Daggett	79	N3457.75 W11634.69	1760
EED	Needles	99	N3445.96 W11428.43	650
GFS	Goffs	91	N3507.87 W11510.59	4019
GRL	Groom Lake	18	N3713.91 W11548.16	4475
HEC	Hector	74	N3447.83 W11627.78	1854
ILC	Wilson Creek	110	N3815.02 W11423.65	9318
INS	Creech AFB	87	N3635.20 W11540.12	3101
LAS	McCarran Intl	116	N3604.78 W11509.59	2142
LSV	Nellis	12	N3614.68 W11501.50	1864
MLF	Milford	58	N3821.62 W11300.79	4977
MMM	Mormon Mesa	90	N3646.16 W11416.65	2120
MVA	Mina	98	N3833.92 W11801.97	7860
OAL	Coale Dale	124	N3800.20 W11746.23	4800
PGS	Peach Springs	57	N3537.48 W11332.67	4754
TPH	Tonopah Muni	119	N3801.84 W11702.01	5330
TQQ	Silverbow	77	N3748.00 W11647.00	5500
UTI	St George	23	N3705.29 W11335.53	2871



RWY 3L-21R
 PCN 46 R/C/W/T
 RWY 3R-21L
 PCN 51 R/C/W/T
 2017

PAR	RWY	CAT	MINIMA		ARP	ELEV	Scale 1:35'500	
	21L	A B D E	2057 - 0.8 200	(200-0.8/1.6) GS 3°	36° 14.060° N 115° 01.058° W	1857 [ft] 566 [m]	0 300 600 900 1200 1500 [m]	
	3R	A B D E	2057 - 0.8 200	(200-0.8/1.6) GS 3°			0 1000 2000 3000 4000 5000 [ft]	
SRA	21R	A C D E	2257 - 1.2 350	(350-1.2/1.6)				
	3L	A C D E	2257 - 1.2 350	(350-1.2/1.6)				

RWY	TORA	TODA	ASDA	LDA	PSN	THR	ALS
21L	10051 [ft] 3063 [m]	11051 [ft] 3368 [m]	11051 [ft] 3368 [m]	10051 [ft] 3063 [m]	36°14.043' N	115°01.018' W	⊕
3R	10120 [ft] 3084 [m]	11120 [ft] 3398 [m]	11120 [ft] 3398 [m]	10120 [ft] 3084 [m]	36°13.029' N	115°02.038' W	

ATIS	NELLIS GROUND	NELLIS TOWER	NELLIS CONTROL	TACAN	ILS RWY 21L	NELLIS EAST	NELLIS WEST
270.100 MHz	275.800 121.800	327.000 132.55	317.525	LSV 12X	109.10 Mhz	384.400	385.000

FYTTR THREE DEPARTURE IFR CHART | VALID 2014 LAS VEGAS, NEVADA

ATIS
270.100
NELLIS GROUND
275.800
NELLIS TOWER
327.000
NELLIS CONTROL
317.525
NELLIS DEP/APP EAST
384.400
BLACKJACK
377.800



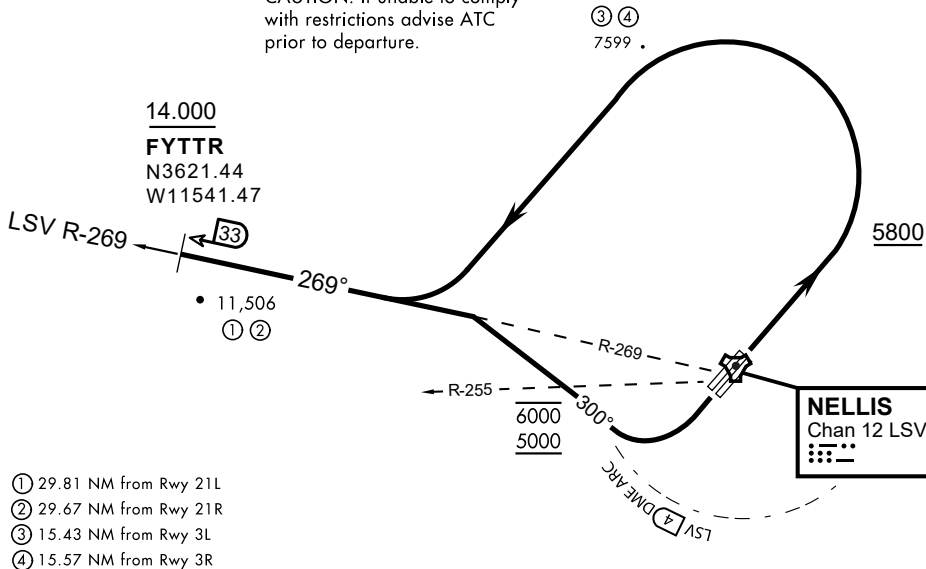
Rwy	Knots	60	120	180	240	300	360
3L (a)	V/V(fpm)	394	788	1182	1576	1970	2364
3R (a)	V/V(fpm)	392	784	1176	1568	1960	2352
21L (b)	V/V(fpm)	388	776	1164	1552	1940	2328
21R (b)	V/V(fpm)	390	780	1170	1560	1950	2340

Minimum Climb Rate

(a) to 9300

(b) to 13 500

CAUTION: If unable to comply with restrictions advise ATC prior to departure.



- ① 29.81 NM from Rwy 21L
- ② 29.67 NM from Rwy 21R
- ③ 15.43 NM from Rwy 3L
- ④ 15.57 NM from Rwy 3R

DEPARTURE ROUTE DESCRIPTION

TAKEOFF RWY 3L/R

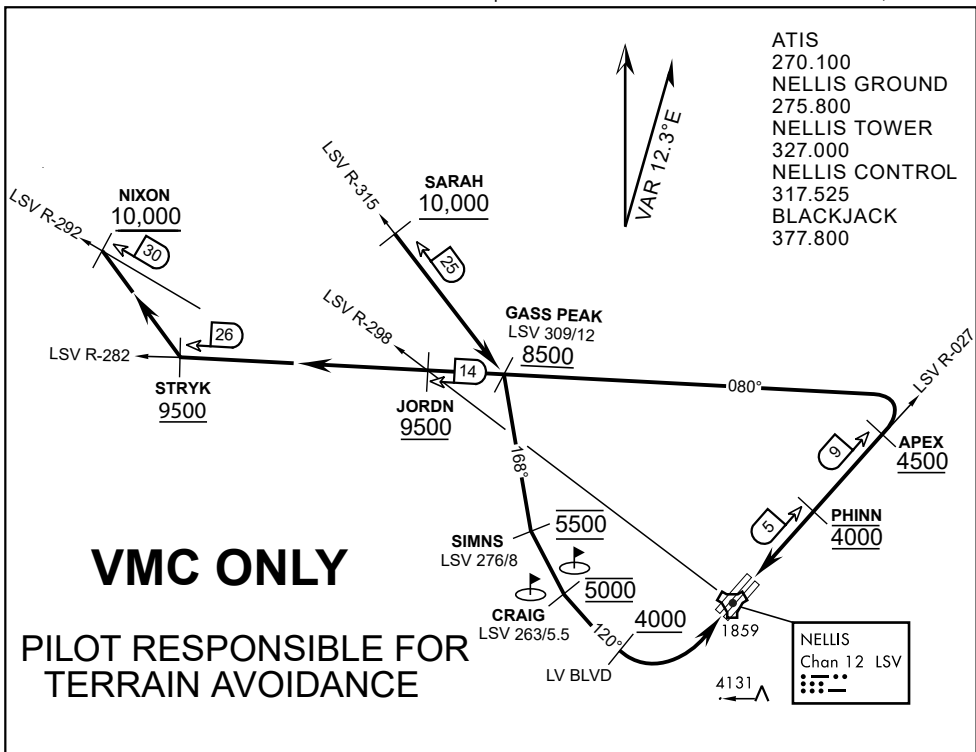
- Fly runway heading until reaching 5,800'.
- Then climbing left turn to intercept LSV TACAN R-269 outbound.
- Cross FYTTR at or above 14,000' or as assigned, then via assigned route.

TAKEOFF RWY 21L/21R

- Turn right to intercept LSV TACAN R-269 outbound.
- Remain within LSV 4 DME until joining LSV R-269
- Cross R-255 between 5,000' and 6,000'.
- Cross FYTTR at or above 14,000' or as assigned, then via assigned route.

NOISE ABATEMENT PROCEDURES:

Fly according Nellis Noise Abatement instructions as published



APPROACH ROUTE DESCRIPTION

APPROACH RWY 3L/R

Cross STRYK at or above 9,500' MSL, proceed direct GASS PEAK. Cross JORDN at or above 9,500' MSL, cross GASS PEAK at or above 8,500' MSL. Proceed direct SIMNS and cross at 5,500' MSL. Cross Las Vegas Blvd at or above 4,000' MSL then to 3,500' MSL for Initial. Remain within 4 DME if LSV on turn to final.

VFR STRAIGHT-IN RWY 3L/R

Depart CRAIG & descend to be at 3,000' MSL by Las Vegas Blvd. Do not descend below 3,000' MSL until within 5 DME of LSV or 4 NM of the runway on turn to final.

APPROACH RWY 21L/R

Cross STRYK at or above 9,500' MSL, proceed direct GASS PEAK. Cross JORDN at or above 9,500' MSL, cross GASS PEAK at or above 8,500' MSL. Cross APEX at or above 4,500' MSL then direct 5NM initial. Descend to cross PHINN at 4,000' MSL, Inside 5 NM descend to 3,500' MSL.

VFR STRAIGHT-IN RWY 21L/R

Cross APEX at 4,000' MSL. Descend to be at 3,000' MSL at PHINN. Descend to 3,000' MSL at LSV 027/5.

RANGE 63B EXIT

SOUTH: Via NIXON at or above 10,000' MSL, then direct STRYK.
EAST: Via SARAH at or above 10,000' MSL, then direct GASS PEAK.