

MISSION DATA CARD

OPORD		Callsign		Mission		Date/Time		
047/2024		Edelweiss 1		Training		312000OCT24		
Task	IFR Training					Freq		
AO						135.0		
Departure				Recovery				
MORMON MESA FOUR				ILS or LOC/DME X RWY 21L				
#	Callsign		Pilot		IFF	TCN	LSR	NET

LOADOUT

A/A		GUN	
A/G		CHF	
POD		FLR	
TKS		FUEL	

TOLD

	Takeoff	Target	Joker	Bingo	Land
FUEL	7163			2500	

AIRBASES

	Name	TCN	ATIS	GND	TWR	RWY	Elev	ILS
Dep	Nellis AFB	12X	270.1	275.8	327.0	21L	1850	109.1
Arr	Nellis AFB	12X	270.1	275.8	327.0	21L	1850	109.1
Div	Creech AFB	87X	290.45	275.8	360.6			

FLIGHTPLAN

#	Name	Navaid/Coords/DME	ALT	TOT
1	Mormon Mesa	217 (N36 46.160 W114 16.650)	20000	
2	Boulder City	016 (N35 59.750 W114 51.820)	20000	
3	Creso	213 (N35 46.320 W115 09.660)	20000	
4	Boach	213 (N35 40.680 W115 17.520)	20000	
5	Wopma	213 (N35 32.820 W115 28.080)	20000	
6	Whigg	213 (N35 30.420 W115 31.260)	20000	
7	GOFFS	308 (N35 07.870 W115 10.590)	20000	
8	Needles	287 (N34 45.960 W114 28.430)	20000	
9	Unpas	331 (N35 17.700 W114 38.400)	20000	
10	Lynsy	331 (N35 39.540 W114 45.180)	20000	
11	Boulder City	150 (N35 59.750 W114 51.820)	20000	
12	McCarran Intl	N36 04.780 W115 09.590	2069	
13	Whigg	N35 30.420 W115 31.260	20000	
14	Boach	213 (N35 40.680 W115 17.520)	20000	
15	Boulder City	213 (N35 59.750 W114 51.820)	20000	
16	Nellis	N36 14.680 W115 01.500	1865	

RADIO CHANNELS

#	Freq	Name
1		Flight/Squadron specific
2	289.4	Nellis Clearance Delivery
3	275.8	Nellis Ground
4	327.0	Nellis Tower
5	385.4	Nellis Approach/Departure West
6	273.55	Nellis Approach/Departure East
7	317.525	Nellis Control -- Sally
8	254.4	Nellis Control-- Lee
9	305.6	SOF Bullseye
10	343.725	EMERGENCY SINGLE FRQ
11	270.1	Nellis ATIS
12	360.625	Creech AFB Tower
13	250.1	HAVE QUICK 13
14	251.1	HAVE QUICK 14
15	252.1	HAVE QUICK 15
16	377.8	Blackjack
17	265.0	KC-135 AR-641A
18	360.8	KC-135MPRS AR-635
19	319.8	KC-135MPRS AR-625
20	300.05	KC-135 AR-231V

RAMROD

0	1	2	3	4	5	6	7	8	9
M	I	C	R	O	W	A	V	E	D

KTC 1400 C

	0	1	2	3	4	5	6	7	8	9
A	BRWV	HSF	TOM	EY	UD	CIQ	LJ	XN	KG	PA
B	UFNM	YQP	RTB	HD	LK	CEO	VX	SW	JA	IG
C	SKAJ	ILT	OFW	GP	DE	VMU	XN	BR	YQ	CH
D	EALV	BJR	WQY	IH	DM	TGP	XO	FN	KS	UC
E	UJSE	WRD	KBG	AM	FY	NIO	QH	PT	XL	CV
F	RVXI	KWY	TNG	AS	BJ	DCQ	PF	UM	HL	OE
G	OVBX	IFC	WKN	LH	SM	RQU	DJ	YE	TP	AG
H	KYIN	QPH	DXE	UJ	FS	WAT	VC	GM	LO	RB
I	ENJO	PLS	TCU	XK	QG	YAM	FI	DV	HW	BR
J	PBGF	NQK	ISE	RH	VC	WMY	DJ	XU	OL	AT
K	KSHT	RJV	BIC	DQ	WM	OYN	AP	FG	UL	EX
L	GXSC	PQJ	YKI	MD	VR	BAH	FL	OT	NE	UW
M	SYGD	OUH	NME	LA	VT	KJI	QX	RB	FW	CP
N	YDFN	TSM	VWH	QC	ER	UGB	AX	LP	IK	OJ
O	UKYL	GPH	MVN	XW	SJ	BAR	FI	TQ	EC	DO
P	GPJA	MNB	FSK	RW	EO	DIV	XC	LT	QY	HU
Q	OMFC	KEX	IRJ	WH	NG	QTD	BU	VL	SY	PA
R	QNPE	GTR	BSW	DJ	KF	LXU	IM	HY	OA	VC
S	QRLW	PYH	NFV	DE	OU	TJM	AI	BC	XK	SG
T	WENK	QFH	BVM	GC	JX	ULS	AT	PD	RY	OI
U	OPWE	XMN	YQB	AS	DI	UFK	VL	RJ	TG	CH
V	MJIK	XYC	VEW	NA	QU	HGB	FD	LT	PO	RS
W	JXFO	RCB	SUW	TP	MA	GEL	DY	IQ	NV	HK
X	BXAI	LGR	FHD	YO	ET	WQV	PM	JC	UN	KS
Y	KYDP	QFA	BER	WV	XT	LHJ	NC	SO	MI	UG

NAVAIDS

Id	Name	Channel	Position	Elevation
BCE	Bryce Canyon	75	N3741.35 W11218.23	9040
BIH	Bishop	33	N3722.62 W11821.99	4114
BLD	Boulder	114	N3559.75 W11451.82	3650
BTY	Beatty	94	N3648.54 W11644.86	2925
CDC	Cedar City	120	N3747.24 W11304.90	5463
DAG	Daggett	79	N3457.75 W11634.69	1760
EED	Needles	99	N3445.96 W11428.43	650
GFS	Goffs	91	N3507.87 W11510.59	4019
GRL	Groom Lake	18	N3713.91 W11548.16	4475
HEC	Hector	74	N3447.83 W11627.78	1854
ILC	Wilson Creek	110	N3815.02 W11423.65	9318
INS	Creech AFB	87	N3635.20 W11540.12	3101
LAS	McCarran Intl	116	N3604.78 W11509.59	2142
LSV	Nellis	12	N3614.68 W11501.50	1864
MLF	Milford	58	N3821.62 W11300.79	4977
MMM	Mormon Mesa	90	N3646.16 W11416.65	2120
MVA	Mina	98	N3833.92 W11801.97	7860
OAL	Coale Dale	124	N3800.20 W11746.23	4800
PGS	Peach Springs	57	N3537.48 W11332.67	4754
TPH	Tonopah Muni	119	N3801.84 W11702.01	5330
TQQ	Silverbow	77	N3748.00 W11647.00	5500
UTI	St George	23	N3705.29 W11335.53	2871



RWY 3L-21R
 PCN 46 R/C/W/T
 RWY 3R-21L
 PCN 51 R/C/W/T
 2017

PAR	RWY	CAT	MINIMA		ARP	ELEV	Scale 1:35'500	
	21L	A B D E	2057 - 0.8 200	(200-0.8/1.6) GS 3°	36° 14.060° N 115° 01.058° W	1857 [ft] 566 [m]	0	300
	3R	A B D E	2057 - 0.8 200	(200-0.8/1.6) GS 3°			600	900
	21R	A C D E	2257 - 1.2 350	(350-1.2/1.6)			1200	1500 [m]
	3L	A C D E	2257 - 1.2 350	(350-1.2/1.6)			0	1000
							2000	3000
							4000	5000 [ft]

RWY	TORA	TODA	ASDA	LDA	PSN	THR	ALS
21L	10051 [ft] 3063 [m]	11051 [ft] 3368 [m]	11051 [ft] 3368 [m]	10051 [ft] 3063 [m]	36°14.043' N	115°01.018' W	⊕
3R	10120 [ft] 3084 [m]	11120 [ft] 3398 [m]	11120 [ft] 3398 [m]	10120 [ft] 3084 [m]	36°13.029' N	115°02.038' W	

ATIS	NELLIS GROUND	NELLIS TOWER	NELLIS CONTROL	TACAN	ILS RWY 21L	NELLIS EAST	NELLIS WEST
270.100 MHz	275.800 121.800	327.000 132.55	317.525	LSV 12X	109.10 Mhz	384.400	385.000

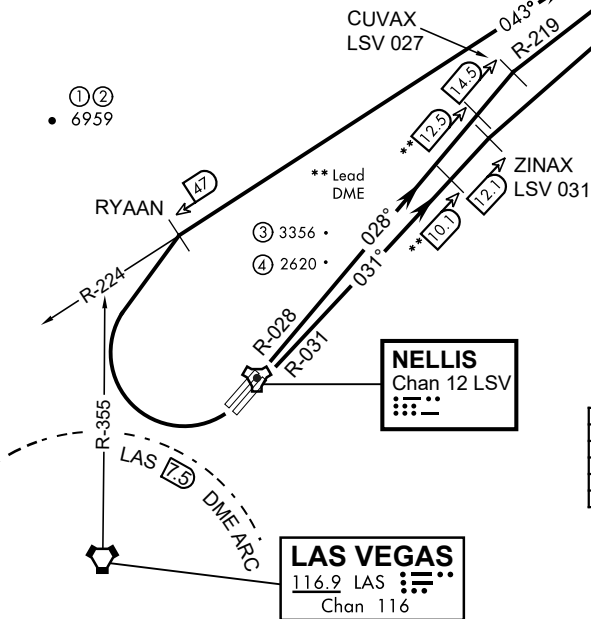
ATIS
270.100
NELLIS GROUND
275.800
NELLIS TOWER
327.000
NELLIS CONTROL
317.525
NELLIS DEP/APP EAST
384.400
BLACKJACK
377.800



MORMON MESA
114.3 MMM
Chan 90
L-9 H-3

19,000

CAUTION: If unable to comply with restrictions advise ATC prior to departure.



- ① 12.24 NM from Rwy 21R
- ② 12.40 NM from Rwy 21L
- ③ 5.67 NM from Rwy 3L
- ④ 5.85 NM from Rwy 3R

Rwy	Knots	60	120	180	240	300	360
* 3L	V/V(fpm)	291	582	873	1164	1455	1746
* 3R	V/V(fpm)	258	516	774	1032	1290	1548
* 21L	V/V(fpm)	529	1058	1587	2116	2645	3174
* 21R	V/V(fpm)	536	1072	1680	2144	2680	3216
† 3L/R	V/V(fpm)	359	718	1077	1436	1795	2154

* Minimum † ATC Climb Rate
 ① To 3600
 ② To 3200
 ③ To 17,000
 ④ To 13,500
 ⑤ To 19,000

DEPARTURE ROUTE DESCRIPTION

TAKE-OFF RWY 3L

• Fly runway heading to intercept the LSV TACAN R-027 then direct CUVAX, intercept the MMM VORTAC R-219 then direct MMM climbing to FL190 or as assigned, then via assigned route.

TAKE-OFF RWY 3R

• Fly runway heading to intercept the LSV TACAN R-031 then direct ZINAX, intercept the MMM VORTAC R-217 then direct MMM, climbing to FL190 or as assigned, then via assigned route.

TAKE-OFF RWY 21L/R

• Turn right to intercept MMM VORTAC R-224 prior to MMM 47 DME, remain North of the LAS VORTAC 7.5 DME, remain East of LAS R-355, intercept MMM R-224 then direct MMM cross MMM at or above FL190, then via assigned route.

NOISE ABATMENT PROCEDURES: Fly acc. Nellis Noise Abatement instructions

LAS VEGAS, NEVADA

ILS or LOC X RWY 21L

LOC I-DIQ 109.1	APCH CRS 209°	Rwy ldg 21L 10,051	21R 10,120
		TDZE 1865	1869
		Arprt Elev 1869	

AL-227 (USAF)

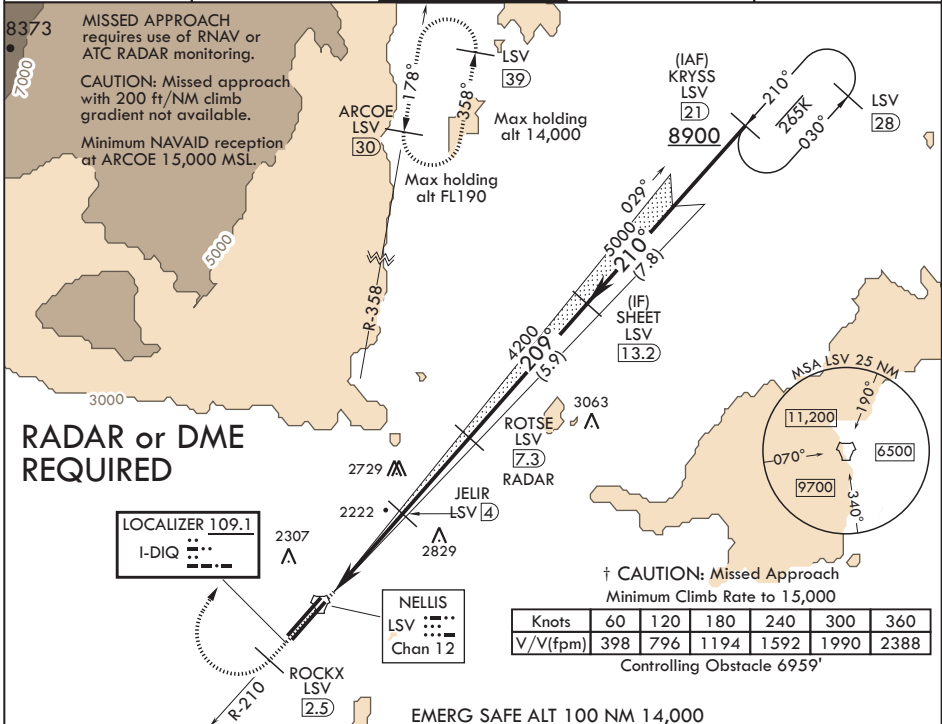
NELLIS AFB (KLSV)

⚠ * When ALS inop, increase all CAT RVR to 40, vis to 3/4 mile.
 ** When ALS inop, increase CAT AB RVR to 55, vis to 1 mile, CAT CDE vis to 1 3/4 miles.
 *** Circling not authorized E of Rwy 3R-21L.



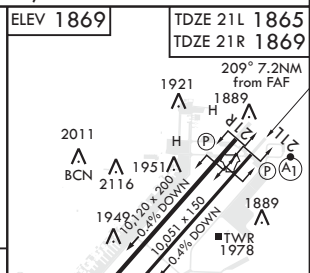
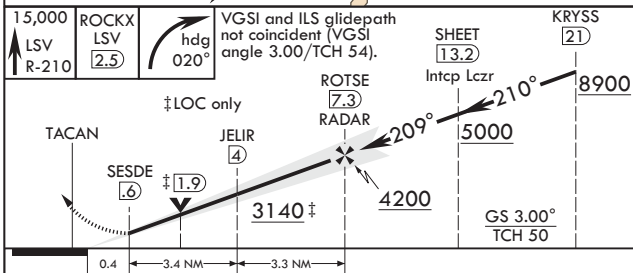
† MISSED APPROACH: Climb to 15,000, intercept LSV TACAN R-210 to 2.5 DME (ROCKX), then climbing right turn heading 020° to join LSV TACAN R-358 to ARCOE and hold, continue climb in hold to 15,000. Missed approach not for civil use.

ATIS 270.1	APP CON 124.95 273.55	TOWER 132.55 327.0	GND CON 121.8 275.8	CLNC DEL 120.9 289.4
----------------------	---------------------------------	------------------------------	-------------------------------	--------------------------------



Knots	60	120	180	240	300	360
V/f (fpm)	398	796	1194	1592	1990	2388

Controlling Obstacle 6959'



CATEGORY	A	B	C	D	E
S-ILS 21L*	2065/24		200	(200-1/2)	
S-LOC 21L**	2480/24	615 (700-1/2)	2480-1 3/4	615	(700-1 3/4)
SIDESTEP 21R	2500-1	631 (700-1)	2500-1 3/4	631	(700-1 3/4)
CIRCLING***	2480-1	2620-1	2620-2 1/4	2840-3	3040-3
	611 (700-1)	751 (800-1)	751 (800-2 1/4)	971 (1000-3)	1171 (1200-3)

HIRL all Rwys	⚠ 2022				
FAF to MAP 6.7 NM					
Knots	60	90	120	150	180
Min:Sec	6:42	4:28	3:21	2:41	2:14

LAS VEGAS, NEVADA

36°14'N - 115°02'W

NELLIS AFB (KLSV)

Amdt 9 03JAN19

ILS or LOC X RWY 21L

SW-4, 05 DEC 2019 to 02 JAN 2020

SW-4, 05 DEC 2019 to 02 JAN 2020



INDIAN SPRINGS, NEVADA

TACAN INS Chan 87	APCH CRS 065°	Rwy ldg TDZE 3133	9002 3133
		Arpt Elev 3113	

INDIAN SPRINGS AF AUX (KINS)

▼ * MISSED APPROACH: Straight ahead to INS TACAN, intercept INS R-outbound, cross 17 DME at or above 9500, then direkt KSV TACAN 114

NELLIS CON

CREECH AFB TOWER
118.30 60.60

GND CON

NOT FOR CIVIL USE

FOR USE UNDER BASIC VFR
WEATHER MINIMUMS ONLY

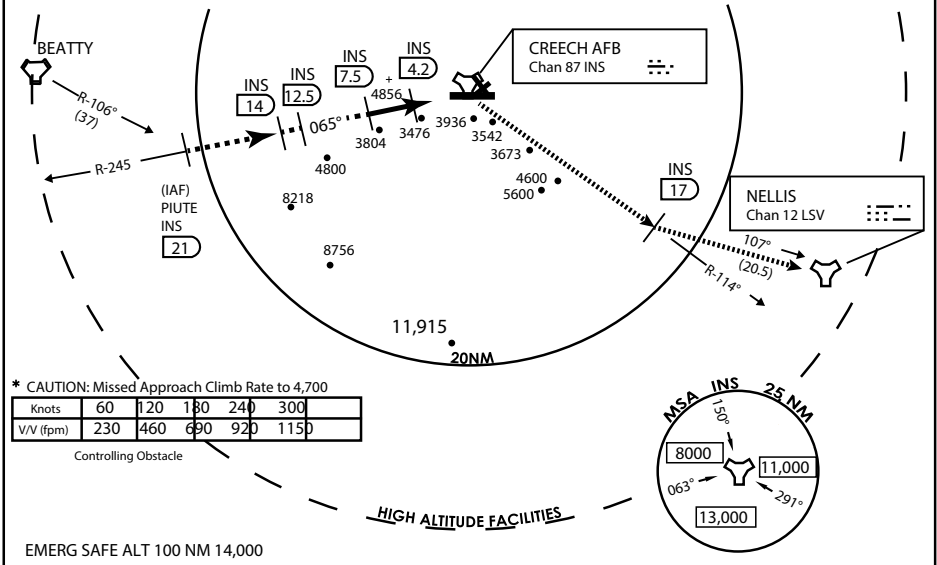
PILOT IS RESPONSIBLE FOR TERRAIN/OBSTACLE AVOIDANCE AND APPROPRIATE VFR CLOUD CLEARANCE FOR ALL

CAUTION: Descent gradients are greater than allowed under standard TERPS criteria and inbound course does not meet straight-in criteria

CAUTION: Final approach course crosses Runway centerline at MIDFIELD. Maneuvering left of course required prior to landing. Do not Maneuver farther north than the INS R- 258

Modified by viaBog 66 for use with DCS
NOT FOR REAL LIFE NAVIGATION

Modified by viaBog 66 for use with DCS
NOT FOR REAL LIFE NAVIGATION



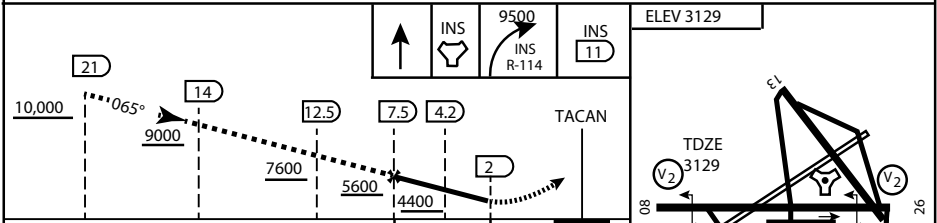
* CAUTION: Missed Approach Climb Rate to 4,700

Knots	60	120	180	240	300
V/V (fpm)	230	460	690	920	1150

Controlling Obstacle

HIGH ALTITUDE FACILITIES

EMERG SAFE ALT 100 NM 14,000



CATEGORY	A	B	C	D	E
S-8	3760-1 1/2	627 (700-1 1/2)	3760-1 3/4 627 (700-1 3/4)	3760-2 627 (700-2)	3760-2 1/4 627 (700-2 1/4)
CIRCLING	NOT AUTHORIZED				

MIRL Rwy 8-26

CITY OF INDIAN, NEVADA

INDIAN SPRINGS AF AUX (KINS)

(FOR DAY VFR USE ONLY)



AIRPORT DIAGRAM

ATIS
122.5
CREECH TOWER
118.4 360.7 38.65
GND CON
118.3 275.8
CLNC DEL

115°42'W

FIELD
ELEV
3127

80

972 X 150

HOT
CARGO
PAD

BAK-12

VAR 12.5° E

WEST
EOR

115°41'W

476 vFG JAN 2019

CONTROL
TOWER

BASE
OPS

RPA LOLA
WEST

RPA LOLA
EAST

LOLA /
HUNG
ORDNANCE

199 X 100
ELEV
3127

RUNWAY
31/13
MQ/RQ-1
ONLY

9002 X 150

258.5°

860 X 100

313.8°

4064 X 100

115°40'W

BAK-12

ELEV
3127

EAST
EOR

1030 X 150

26

476 vFG JAN 2019

AIRPORT DIAGRAM