

MISSION DATA CARD

OPORD		Callsign		Mission		Date/Time		
050/2024		Edelweiss 4		Training		062010NOV24		
Task						Freq		
AO						264.45		
Departure				Recovery				
FYTTR LOW				ILS or LOC/DME X RWY 21L				
#	Callsign		Pilot		IFF	TCN	LSR	NET

LOADOUT

A/A						GUN	
A/G						CHF	
POD						FLR	
TKS						FUEL	

TOLD

	Takeoff	Target	Joker	Bingo	Land
FUEL	10803				

AIRBASES

	Name	TCN	ATIS	GND	TWR	RWY	Elev	ILS
Dep	Nellis AFB	12X	270.1	275.8	327.0	21L	1850	109.1
Arr	Nellis AFB	12X	270.1	275.8	327.0	21L	1850	109.1
Div	Creech AFB	87X	290.45	275.8	360.6			

RADIO CHANNELS

#	Freq	Name
1		Flight/Squadron specific
2	289.4	Nellis Clearance Delivery
3	275.8	Nellis Ground
4	327.0	Nellis Tower
5	385.4	Nellis Approach/Departure West
6	273.55	Nellis Approach/Departure East
7	317.525	Nellis Control -- Sally
8	254.4	Nellis Control-- Lee
9	305.6	SOF Bullseye
10	343.725	EMERGENCY SINGLE FRQ
11	270.1	Nellis ATIS
12	360.625	Creech AFB Tower
13	250.1	HAVE QUICK 13
14	251.1	HAVE QUICK 14
15	252.1	HAVE QUICK 15
16	377.8	Blackjack
17	265.0	KC-135 AR-641A
18	360.8	KC-135MPRS AR-635
19	319.8	KC-135MPRS AR-625
20	300.05	KC-135 AR-231V

RAMROD

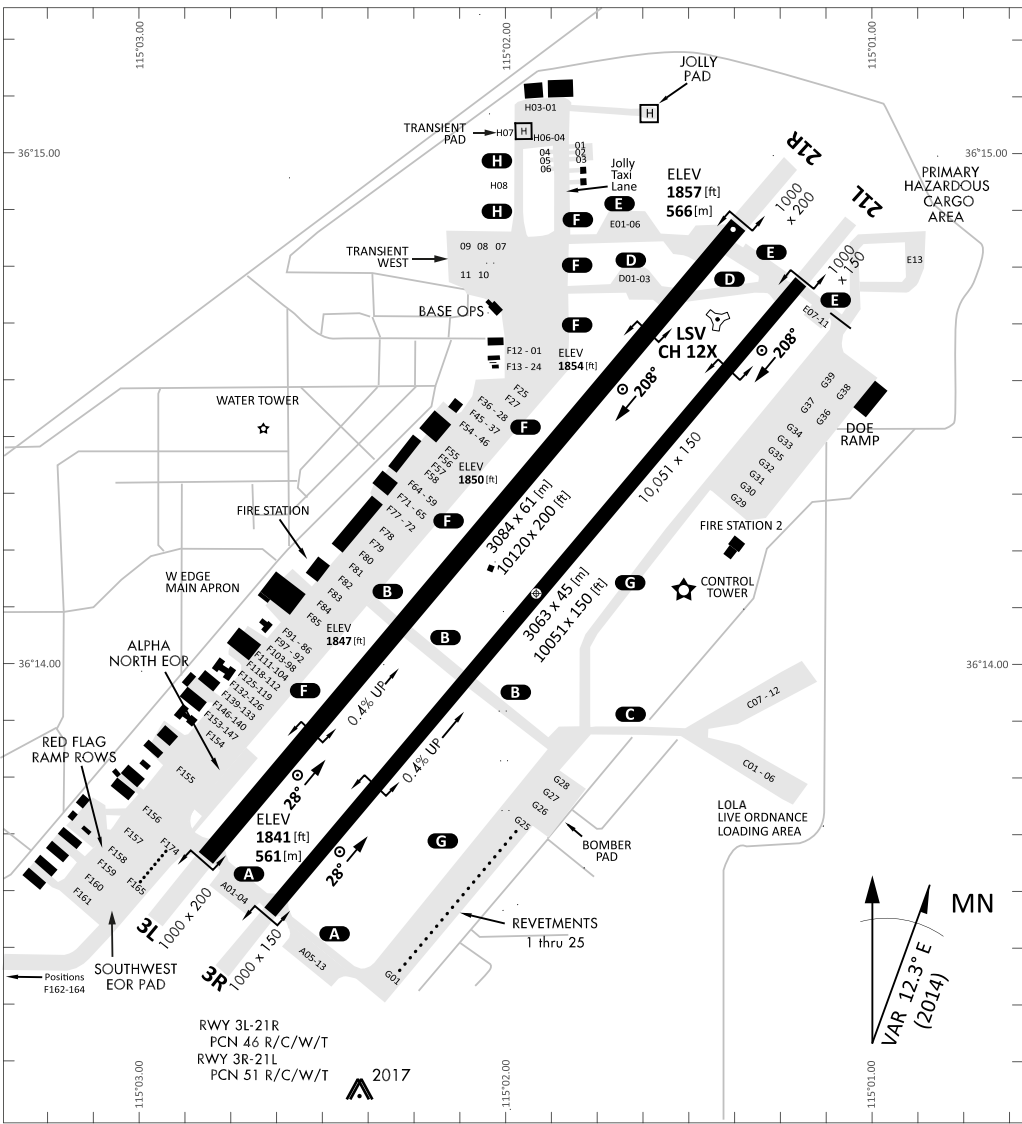
0	1	2	3	4	5	6	7	8	9
A	R	T	I	C	H	O	K	E	S

KTC 1400 C

	0	1	2	3	4	5	6	7	8	9
A	YIHA	EGL	MUX	WR	BP	VQN	OJ	CF	TS	DK
B	XLWN	OKJ	ETP	RB	AV	SDU	HY	GF	QM	CI
C	OLIQ	KXA	FPB	WJ	UC	YHG	DM	RS	VN	TE
D	KAXS	BHW	TQD	MJ	LO	FGE	CP	NU	RY	IV
E	IPXN	WBQ	JFO	UE	DH	YCL	GR	KV	AT	SM
F	YLAF	OSN	VXE	UH	GR	DMP	QJ	TC	WI	BK
G	WXSK	TUC	IBA	RY	DN	HGJ	VL	QM	FP	OE
H	VXSE	HBD	AIR	WQ	JF	MOT	LN	KP	UY	GC
I	IFME	SKT	DUP	WJ	NO	ALQ	GV	CR	HY	XB
J	XWSA	IFP	JBN	YK	VL	EMQ	CU	GO	HT	RD
K	STXH	AWE	JPQ	YC	MV	FOR	DL	NK	UG	IB
L	UPQS	NHX	JAK	YM	CL	DTB	GE	OR	VW	IF
M	TFRJ	BLX	DWH	ME	QU	SGA	CV	PN	OK	IY
N	BAHQ	WKD	YSX	TO	CE	PVN	JI	LR	GM	UF
O	RPGO	AJM	FSI	YD	CE	HTK	WX	UB	QL	VN
P	AYXE	HSV	CRQ	TP	IW	DKG	UF	NL	BM	OJ
Q	AKYL	HXQ	PBD	VJ	RU	EOW	SF	GC	IN	MT
R	LCQY	VES	PNI	WA	RX	BKH	OJ	FT	DU	MG
S	OGDY	WHM	LRE	FX	IC	NKS	BU	AT	VQ	JP
T	VBNX	EWC	GRJ	YT	IS	OPM	UD	QK	AH	FL
U	TMKB	HXD	JYI	NG	CU	EPW	RV	FL	SO	QA
V	BSAX	OKP	HEL	VI	MY	TGN	CJ	QD	UR	WF
W	DOTM	QCI	VAH	BY	JK	PUR	NL	SX	FW	EG
X	LFCO	GUW	IYT	HK	QP	EXM	DS	BR	AN	JV
Y	ERTY	XJD	LBW	QK	FV	IUM	HC	NG	PA	SO

NAVAIDS

Id	Name	Channel	Position	Elevation
BCE	Bryce Canyon	75	N3741.35 W11218.23	9040
BIH	Bishop	33	N3722.62 W11821.99	4114
BLD	Boulder	114	N3559.75 W11451.82	3650
BTY	Beatty	94	N3648.54 W11644.86	2925
CDC	Cedar City	120	N3747.24 W11304.90	5463
DAG	Daggett	79	N3457.75 W11634.69	1760
EED	Needles	99	N3445.96 W11428.43	650
GFS	Goffs	91	N3507.87 W11510.59	4019
GRL	Groom Lake	18	N3713.91 W11548.16	4475
HEC	Hector	74	N3447.83 W11627.78	1854
ILC	Wilson Creek	110	N3815.02 W11423.65	9318
INS	Creech AFB	87	N3635.20 W11540.12	3101
LAS	McCarran Intl	116	N3604.78 W11509.59	2142
LSV	Nellis	12	N3614.68 W11501.50	1864
MLF	Milford	58	N3821.62 W11300.79	4977
MMM	Mormon Mesa	90	N3646.16 W11416.65	2120
MVA	Mina	98	N3833.92 W11801.97	7860
OAL	Coale Dale	124	N3800.20 W11746.23	4800
PGS	Peach Springs	57	N3537.48 W11332.67	4754
TPH	Tonopah Muni	119	N3801.84 W11702.01	5330
TQQ	Silverbow	77	N3748.00 W11647.00	5500
UTI	St George	23	N3705.29 W11335.53	2871



RWY 3L-21R
 PCN 46 R/C/W/T
 RWY 3R-21L
 PCN 51 R/C/W/T
 2017

PAR	RWY	CAT	MINIMA		ARP	ELEV	Scale 1:35'500	
	21L	A B D E	2057 - 0.8 200	(200-0.8/1.6) GS 3°	36° 14.060° N 115° 01.058° W	1857 [ft] 566 [m]	0	300
	3R	A B D E	2057 - 0.8 200	(200-0.8/1.6) GS 3°			600	900
	21R	A C D E	2257 - 1.2 350	(350-1.2/1.6)			1200	1500 [m]
	3L	A C D E	2257 - 1.2 350	(350-1.2/1.6)			0	1000
							2000	3000
							4000	5000 [ft]

RWY	TORA	TODA	ASDA	LDA	PSN	THR	ALS
21L	10051 [ft] 3063 [m]	11051 [ft] 3368 [m]	11051 [ft] 3368 [m]	10051 [ft] 3063 [m]	36°14.043' N	115°01.018' W	⊕
3R	10120 [ft] 3084 [m]	11120 [ft] 3398 [m]	11120 [ft] 3398 [m]	10120 [ft] 3084 [m]	36°13.029' N	115°02.038' W	

ATIS	NELLIS GROUND	NELLIS TOWER	NELLIS CONTROL	TACAN	ILS RWY 21L	NELLIS EAST	NELLIS WEST
270.100 MHz	275.800 121.800	327.000 132.55	317.525	LSV 12X	109.10 Mhz	384.400	385.000

FYTTR LOW VISUAL OPERATION CHART | VALID 2014

ATIS
270.100
NELLIS GROUND
275.800
NELLIS TOWER
327.000
NELLIS CONTROL
317.525
NELLIS DEP/APP EAST
384.400
BLACKJACK
377.800

CAUTION: If unable to comply with restrictions advise ATC prior to departure.



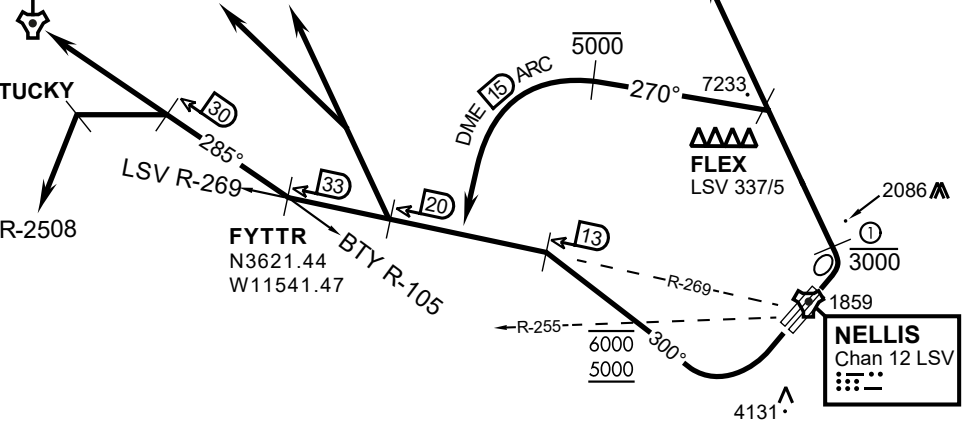
VMC ONLY

PILOT RESPONSIBLE FOR TERRAIN AVOIDANCE

① 4 NM from RWY 3L/R

BEATTY
Chan 94 BTY

RANGE 64/65
RANGE 63



v.1486502 NITTR NAV CHART

DEPARTURE ROUTE DESCRIPTION

TAKEOFF RWY 3L/R:

- Remain below 3,000' MSL until north of Race Track and turned westbound.
- Turn left within 4NM of Nellis direct FLEX. Fly north of FLEX and turn left heading 270°.
- Intercept LSV 15 DME ARC at or below 5,000' MSL.
- ARC south, intercept LSV R-269 outbound. Maintain VFR.

TAKEOFF RWY 21L/21R:

- Follow Noise Abatement Procedures.
- Fly runway heading until past Golf Course, turn right heading 300°.
- Cross LSV R-255 between 5,000' and 6,000' , intercept and proceed outbound on the LSV R-269.Recommend climb to 8,500' MSL or appropriate VFR altitude for overflight of North Las Vegas Training Area. Fly routing for appr. mission/transition.

TRANSITIONS:

- R-4806:** Turn right at the LSV 269/20 direct to assigned ranges.
- BEATTY:** Turn right at FYTTR direct BTY via the BTY R-105
- R-2508:** Turn right at the FYTTR, intercept the BTY 105/30, direct TUCKY, then direct R-2508

FYTTR DEPARTURE AND TRANSITIONS (FYTTR LOW)

LAS VEGAS, NEVADA

ILS or LOC X RWY 21L

LOC I-DIQ 109.1	APCH CRS 209°	Rwy ldg 21L 10,051	21R 10,120
		TDZE 1865	1869
		Arprt Elev 1869	

AL-227 (USAF)

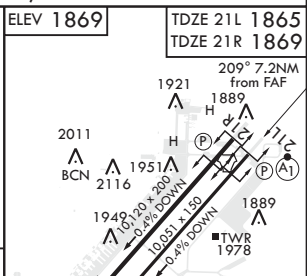
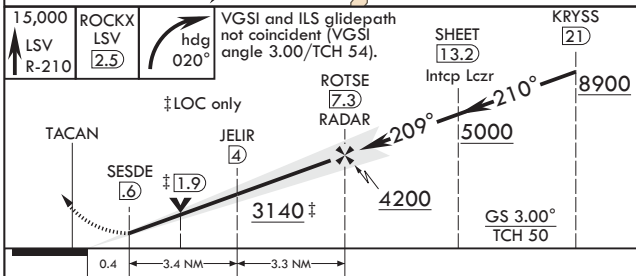
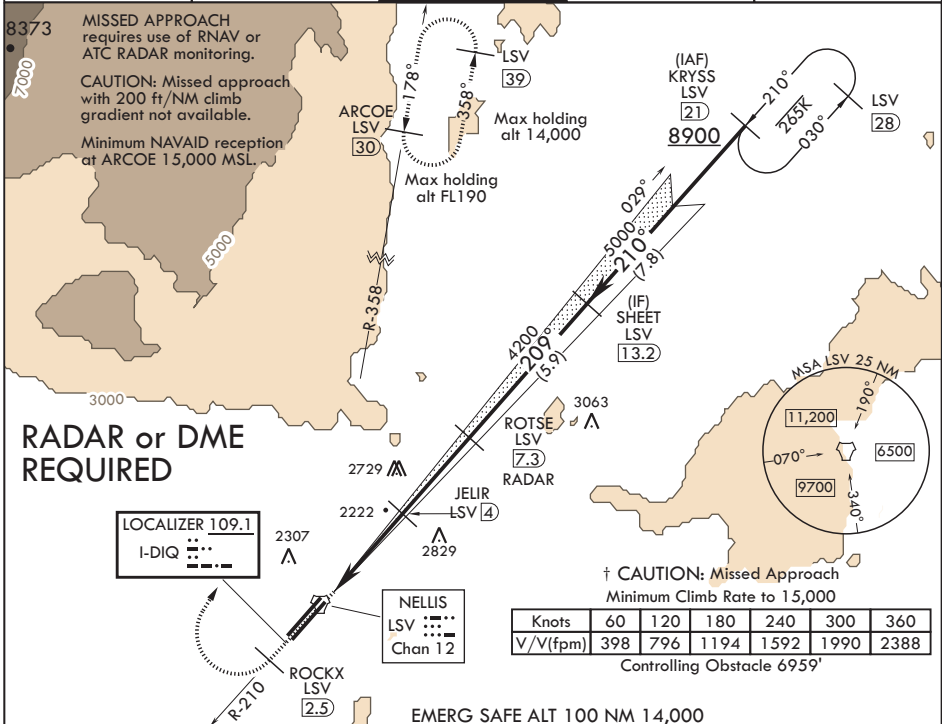
NELLIS AFB (KLSV)

⚠ * When ALS inop, increase all CAT RVR to 40, vis to 3/4 mile.
 ** When ALS inop, increase CAT AB RVR to 55, vis to 1 mile, CAT CDE vis to 1 3/4 miles.
 *** Circling not authorized E of Rwy 3R-21L.



† MISSED APPROACH: Climb to 15,000, intercept LSV TACAN R-210 to 2.5 DME (ROCKX), then climbing right turn heading 020° to join LSV TACAN R-358 to ARCOE and hold, continue climb in hold to 15,000. Missed approach not for civil use.

ATIS 270.1	APP CON 124.95 273.55	TOWER 132.55 327.0	GND CON 121.8 275.8	CLNC DEL 120.9 289.4
----------------------	---------------------------------	------------------------------	-------------------------------	--------------------------------



CATEGORY	A		B		C		D		E	
	2065/24		200		(200-1/2)					
S-ILS 21L*	2480/24		615 (700-1/2)		2480-1 3/4		615 (700-1 3/4)			
S-LOC 21L**	2500-1		631 (700-1)		2500-1 3/4		631 (700-1 3/4)			
SIDESTEP 21R	2480-1		2620-1		2620-2 1/4		2840-3		3040-3	
	611 (700-1)		751 (800-1)		751 (800-2 1/4)		971 (1000-3)		1171 (1200-3)	

HIRL all Rwys						FAF to MAP 6.7 NM					
ELEV 1869						ELEV 1869					
TDZE 21L 1865						TDZE 21R 1869					
Knots						Knots					
60						60					
90						90					
120						120					
150						150					
180						180					
Min:Sec						Min:Sec					
6:42						4:28					
3:21						2:41					
2:14						2:14					

LAS VEGAS, NEVADA

36°14'N - 115°02'W

NELLIS AFB (KLSV)

Amdt 9 03JAN19

ILS or LOC X RWY 21L

SW-4, 05 DEC 2019 to 02 JAN 2020

SW-4, 05 DEC 2019 to 02 JAN 2020



INDIAN SPRINGS, NEVADA

TACAN INS Chan 87	APCH CRS 065°	Rwy ldg TDZE 3133	9002 3113
		Arpt Elev 3113	

INDIAN SPRINGS AF AUX (KINS)

▼ * MISSED APPROACH: Straight ahead to INS TACAN, intercept INS R-outbound, cross 17 DME at or above 9500, then direkt KSV TACAN 114

NELLIS CON

CREECH AFB TOWER
118.30 60.60

GND CON

NOT FOR CIVIL USE

FOR USE UNDER BASIC VFR
WEATHER MINIMUMS ONLY

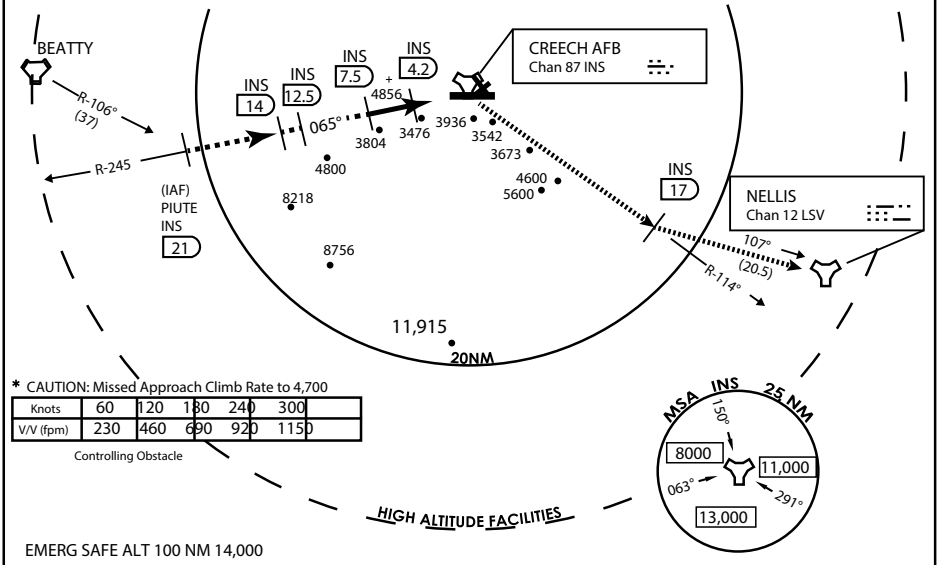
PILOT IS RESPONSIBLE FOR TERRAIN/OBSTACLE AVOIDANCE AND APPROPRIATE VFR CLOUD CLEARANCE FOR ALL

CAUTION: Descent gradients are greater than allowed under standard TERPS criteria and inbound course does not meet straight-in criteria

CAUTION: Final approach course crosses Runway centerline at MIDFIELD. Maneuvering left of course required prior to landing. Do not Maneuver farther north than the INS R- 258

Modified by viaBog 66 for use with DCS
NOT FOR REAL LIFE NAVIGATION

Modified by viaBog 66 for use with DCS
NOT FOR REAL LIFE NAVIGATION



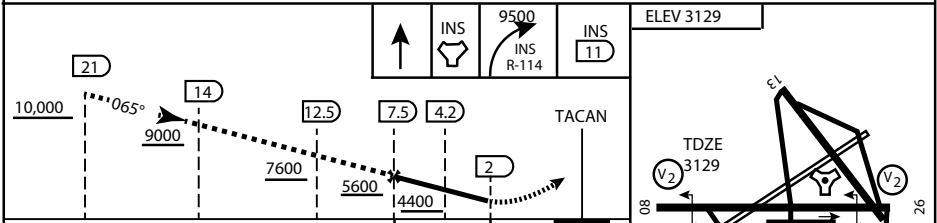
* CAUTION: Missed Approach Climb Rate to 4,700

Knots	60	120	180	240	300
V/V (fpm)	230	460	690	920	1150

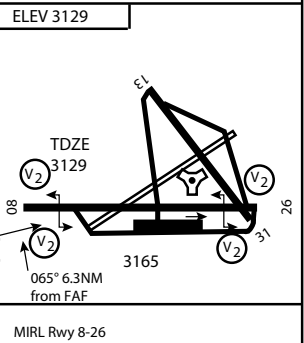
Controlling Obstacle

HIGH ALTITUDE FACILITIES

EMERG SAFE ALT 100 NM 14,000



CATEGORY	A	B	C	D	E
S-8	3760-1 1/2	627 (700-1 1/2)	3760-1 3/4 627 (700-1 3/4)	3760-2 627 (700-2)	3760-2 1/4 627 (700-2 1/4)
CIRCLING	NOT AUTHORIZED				



CITY OF INDIAN, NEVADA

INDIAN SPRINGS AF AUX (KINS)

(FOR DAY VFR USE ONLY)



AIRPORT DIAGRAM

476 VFG

CREECH AFB (KINS)
INDIAN SPRINGS, NEVADA

ATIS
 122.5
 CREECH TOWER
 118.4 360.7 38.65
 GND CON
 118.3 275.8
 CLNC DEL

115°42'W

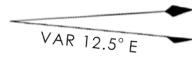
FIELD
 ELEV
 3127

80

972 X 150

HOT CARGO PAD

BAK-12


 VAR 12.5° E

WEST EOR

115°41'W

476 VFG JAN 2019

476 VFG JAN 2019

CONTROL TOWER
 BASE OPS

RPA LOLA WEST

RPA LOLA EAST

LOLA / HUNG ORDNANCE

199 X 100
 ELEV 3127
 RUNWAY 31/13
 MQ/RQ-1 ONLY

258.5°

860 X 100
 313.8°

4064 X 100
 133.8°

BAK-12

ELEV 3127

115°40'W

EAST EOR

1030 X 150

26

AIRPORT DIAGRAM

INDIAN SPRINGS, NEVADA
CREECH AFB (KINS)