

MISSION DATA CARD

OPORD		Callsign		Mission		Date/Time		
006/2024		T-Rex 4		Training		132000SEP24		
Task							Freq	
AO							132.25	
Departure				Recovery				
FYTTR THREE				HI-TACAN RWY 8				
#	Callsign		Pilot		IFF	TCN	LSR	NET

LOADOUT

A/A						GUN	
A/G						CHF	
POD						FLR	
TKS						FUEL	

TOLD

	Takeoff	Target	Joker	Bingo	Land
FUEL	11087				

AIRBASES

	Name	TCN	ATIS	GND	TWR	RWY	Elev	ILS
Dep	Nellis AFB	12X	270.1	275.8	327.0	21L	1850	109.1
Arr	Creech AFB	87X	290.45	275.8	360.6			

OTHER FLIGHTS

Callsign	Mission	Airframe	Freq	TCN	Grpld	Laser
Edelweiss 1	Training	1x F/A-18C	264.15	1/64		171X
AO		Task				
Panther 7	Training	4x F/A-18C	261.35	1/64		157X
AO		Task	SEAD			
Raptor 6	Training	2x F-16C	134.0	1/64		162X
AO		Task				
Rattler 5	Training	2x AH-64D	133.5	1/64		125X
AO	RANGE 64	Task	FAC			

RADIO CHANNELS

#	Freq	Name
1		Flight/Squadron specific
2	289.4	Nellis Clearance Delivery
3	275.8	Nellis Ground
4	327.0	Nellis Tower
5	385.4	Nellis Approach/Departure West
6	273.55	Nellis Approach/Departure East
7	317.525	Nellis Control -- Sally
8	254.4	Nellis Control-- Lee
9	305.6	SOF Bullseye
10	343.725	EMERGENCY SINGLE FRQ
11	270.1	Nellis ATIS
12	360.625	Creech AFB Tower
13	250.1	HAVE QUICK 13
14	251.1	HAVE QUICK 14
15	252.1	HAVE QUICK 15
16	377.8	Blackjack
17	265.0	KC-135 AR-641A
18	360.8	KC-135MPRS AR-635
19	319.8	KC-135MPRS AR-625
20	300.05	KC-135 AR-231V

RAMROD										
0	1	2	3	4	5	6	7	8	9	
P	H	I	L	A	N	D	E	R	S	
KTC 1400 C										
	0	1	2	3	4	5	6	7	8	9
A	ITQX	FKW	DNU	CY	VB	HJM	AE	RS	OG	LP
B	UNPS	RAJ	DMY	WO	FX	CVI	GB	KE	TQ	HL
C	BADU	HKO	QWJ	LI	MS	CRT	YX	FN	EV	PG
D	KXHM	ERB	YWS	OU	PV	QAJ	DL	IN	FT	CG
E	YIQV	XGT	APS	JN	UH	RWF	BK	ED	CO	LM
F	GICQ	RMK	JVO	DL	AX	YFH	TN	WU	EB	SP
G	KURT	SEV	DAF	YQ	MX	HOP	GJ	NL	CI	WB
H	LCIE	UYQ	ROJ	PA	TB	XKH	MS	GV	NF	WD
I	TNSU	WIV	OHQ	BF	CE	RDL	PJ	XM	AK	YG
J	XJCB	AMS	GEO	WU	NK	RHP	TI	QY	LD	VF
K	KFGW	ENV	CPA	TL	HR	MID	BO	SX	UY	JQ
L	BXKP	WAY	ILS	MO	HE	GRC	QU	NF	DT	JV
M	WKHC	ENT	ILU	XJ	QF	OVS	AP	MD	RG	BY
N	KFYU	NBS	RXM	HC	JD	TGW	VE	IL	OQ	AP
O	MRJD	IXP	YCQ	FV	OT	WUS	NK	BA	EL	GH
P	KEHR	SVA	NOW	JQ	BF	PUD	GT	IL	CY	MX
Q	RHPC	BKF	QMY	OL	XT	ESG	NV	WA	UD	IJ
R	WHVQ	AFM	LND	XE	OP	SYK	CB	RJ	GU	TI
S	UBKQ	ENY	SRJ	AV	XI	FTH	WD	GM	CL	PO
T	UVFX	KIM	RTJ	GD	AC	HLN	YB	EQ	PS	OW
U	XNEV	BFI	YKS	RU	TP	CMD	HQ	WG	AJ	OL
V	BUIH	CVA	LXG	KY	QP	JDE	MO	RS	FN	TW
W	QNRM	XOT	IBF	CP	KG	EHL	UA	DS	VW	JY
X	TGKC	UVN	YFA	LJ	IQ	RPO	DE	MX	WS	HB
Y	HKYD	BSM	GLI	TF	OA	RXN	VQ	EC	JU	PW

NAVAIDS

Id	Name	Channel	Position	Elevation
BCE	Bryce Canyon	75	N3741.35 W11218.23	9040
BIH	Bishop	33	N3722.62 W11821.99	4114
BLD	Boulder	114	N3559.75 W11451.82	3650
BTY	Beatty	94	N3648.54 W11644.86	2925
CDC	Cedar City	120	N3747.24 W11304.90	5463
DAG	Daggett	79	N3457.75 W11634.69	1760
EED	Needles	99	N3445.96 W11428.43	650
GFS	Goffs	91	N3507.87 W11510.59	4019
GRL	Groom Lake	18	N3713.91 W11548.16	4475
HEC	Hector	74	N3447.83 W11627.78	1854
ILC	Wilson Creek	110	N3815.02 W11423.65	9318
INS	Creech AFB	87	N3635.20 W11540.12	3101
LAS	McCarran Intl	116	N3604.78 W11509.59	2142
LSV	Nellis	12	N3614.68 W11501.50	1864
MLF	Milford	58	N3821.62 W11300.79	4977
MMM	Mormon Mesa	90	N3646.16 W11416.65	2120
MVA	Mina	98	N3833.92 W11801.97	7860
OAL	Coale Dale	124	N3800.20 W11746.23	4800
PGS	Peach Springs	57	N3537.48 W11332.67	4754
TPH	Tonopah Muni	119	N3801.84 W11702.01	5330
TQQ	Silverbow	77	N3748.00 W11647.00	5500
UTI	St George	23	N3705.29 W11335.53	2871



RWY 3L-21R
 PCN 46 R/C/W/T
 RWY 3R-21L
 PCN 51 R/C/W/T
 2017

PAR	RWY	CAT	MINIMA		ARP	ELEV	Scale 1:35'500 0 300 600 900 1200 1500 [m] 0 1000 2000 3000 4000 5000 [ft]
	21L	A B D E	2057 - 0.8 200 (200-0.8/1.6)	GS 3°	36° 14.060° N	1857 [ft]	
	3R	A B D E	2057 - 0.8 200 (200-0.8/1.6)	GS 3°	115° 01.058° W	566 [m]	
SRA	21R	A C D E	2257 - 1.2 350 (350-1.2/1.6)				
	3L	A C D E	2257 - 1.2 350 (350-1.2/1.6)				

RWY	TORA	TODA	ASDA	LDA	PSN	THR	ALS
21L	10051 [ft] 3063 [m]	11051 [ft] 3368 [m]	11051 [ft] 3368 [m]	10051 [ft] 3063 [m]	36°14.043' N	115°01.018' W	⊕
3R	10120 [ft] 3084 [m]	11120 [ft] 3398 [m]	11120 [ft] 3398 [m]	10120 [ft] 3084 [m]	36°13.029' N	115°02.038' W	

ATIS	NELLIS GROUND	NELLIS TOWER	NELLIS CONTROL	TACAN	ILS RWY 21L	NELLIS EAST	NELLIS WEST
270.100 MHz	275.800 121.800	327.000 132.55	317.525	LSV 12X	109.10 Mhz	384.400	385.000

FYTTR THREE DEPARTURE IFR CHART | VALID 2014 LAS VEGAS, NEVADA

ATIS
270.100
NELLIS GROUND
275.800
NELLIS TOWER
327.000
NELLIS CONTROL
317.525
NELLIS DEP/APP EAST
384.400
BLACKJACK
377.800



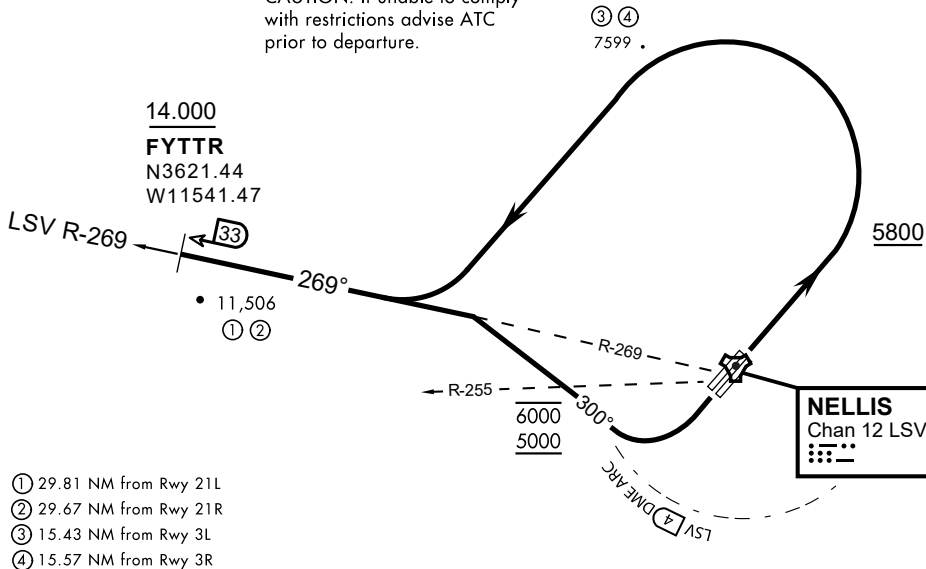
Rwy	Knots	60	120	180	240	300	360
3L (a)	V/V(fpm)	394	788	1182	1576	1970	2364
3R (a)	V/V(fpm)	392	784	1176	1568	1960	2352
21L (b)	V/V(fpm)	388	776	1164	1552	1940	2328
21R (b)	V/V(fpm)	390	780	1170	1560	1950	2340

Minimum Climb Rate

(a) to 9300

(b) to 13 500

CAUTION: If unable to comply with restrictions advise ATC prior to departure.



- ① 29.81 NM from Rwy 21L
- ② 29.67 NM from Rwy 21R
- ③ 15.43 NM from Rwy 3L
- ④ 15.57 NM from Rwy 3R



DEPARTURE ROUTE DESCRIPTION

TAKEOFF RWY 3L/R

- Fly runway heading until reaching 5,800'.
- Then climbing left turn to intercept LSV TACAN R-269 outbound.
- Cross FYTTR at or above 14,000' or as assigned, then via assigned route.

TAKEOFF RWY 21L/21R

- Turn right to intercept LSV TACAN R-269 outbound.
- Remain within LSV 4 DME until joining LSV R-269
- Cross R-255 between 5,000' and 6,000'.
- Cross FYTTR at or above 14,000' or as assigned, then via assigned route.

NOISE ABATEMENT PROCEDURES:

Fly according Nellis Noise Abatement instructions as published

FYTTR THREE DEPARTURE (FYTTR 3)



INDIAN SPRINGS, NEVADA

TACAN INS Chan 87	APCH CRS 065°	Rwy ldg TDZE 3133	9002 3113
		Arpt Elev 3113	

INDIAN SPRINGS AF AUX (KINS)

▼ * MISSED APPROACH: Straight ahead to INS TACAN, intercept INS R-outbound, cross 17 DME at or above 9500, then direkt KSV TACAN 114

NELLIS CON

CREECH AFB TOWER
118.30 60.60

GND CON

NOT FOR CIVIL USE

FOR USE UNDER BASIC VFR WEATHER MINIMUMS ONLY

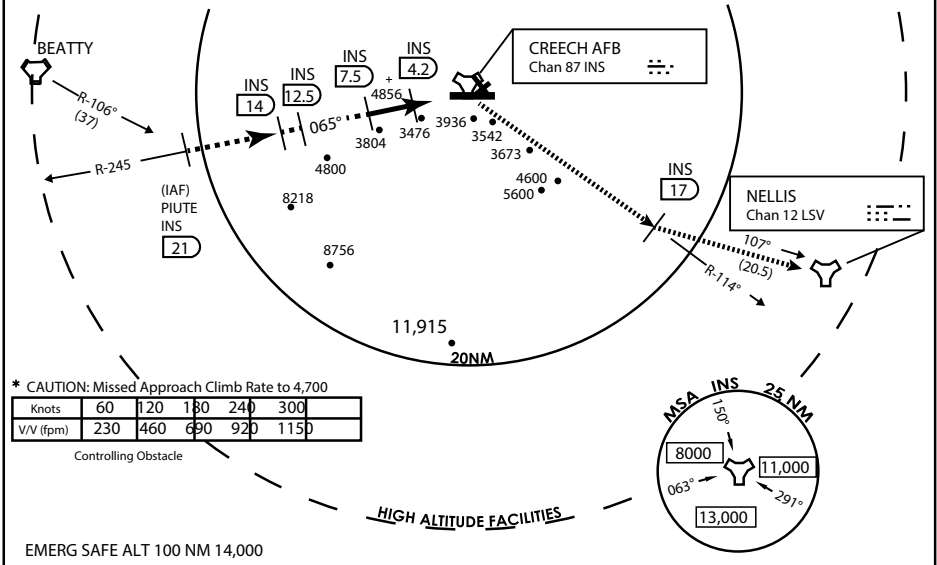
PILOT IS RESPONSIBLE FOR TERRAIN/OBSTACLE AVOIDANCE AND APPROPRIATE VFR CLOUD CLEARANCE FOR ALL

CAUTION: Descent gradients are greater than allowed under standard TERPS criteria and inbound course does not meet straight-in criteria

CAUTION: Final approach course crosses Runway centerline at MIDFIELD. Maneuvering left of course required prior to landing. Do not Maneuver farther north than the INS R- 258

Modified by viaBog 66 for use with DCS
NOT FOR REAL LIFE NAVIGATION

Modified by viaBog 66 for use with DCS
NOT FOR REAL LIFE NAVIGATION



* CAUTION: Missed Approach Climb Rate to 4,700

Knots	60	120	180	240	300
V/V (fpm)	230	460	690	920	1150

Controlling Obstacle

HIGH ALTITUDE FACILITIES

EMERG SAFE ALT 100 NM 14,000

	↑	INS	9500	INS R-114	INS 11	ELEV 3129
	10,000	9000	7600	5600	14400	
	21	14	12.5	7.5	4.2	
						TACAN
CATEGORY	A	B	C	D	E	
S-8	3760-1 ½	627 (700-1 ½)	3760-1¾ 627 (700-1¾)	3760-2 627 (700-2)	3760-2¼ 627 (700-2¼)	
CIRCLING	NOT AUTHORIZED					MIRL Rwy 8-26

CITY OF INDIAN, NEVADA

INDIAN SPRINGS AF AUX (KINS)

(FOR DAY VFR USE ONLY)



AIRPORT DIAGRAM

476 VFG

CREECH AFB (KINS)
INDIAN SPRINGS, NEVADA

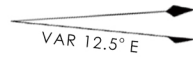
ATIS
122.5
CREECH TOWER
118.4 360.7 38.65
GND CON
118.3 275.8
CLNC DEL

FIELD
ELEV
3127

HOT
CARGO
PAD

BAK-12

WEST
EOR



115°41'W

476 VFG JAN 2019

476 VFG JAN 2019

CONTROL
TOWER
BASE
OPS

RPA LOLA
WEST

RPA LOLA
EAST

LOLA /
HUNG
ORDNANCE

RUNWAY
31/13
MQ/RQ-1
ONLY

258.5°

860 X 100
313.8°

4064 X 100

199 X 100
ELEV
3127

EAST
EOR

BAK-12
ELEV
3127

115°40'W

26

AIRPORT DIAGRAM

INDIAN SPRINGS, NEVADA
CREECH AFB (KINS)