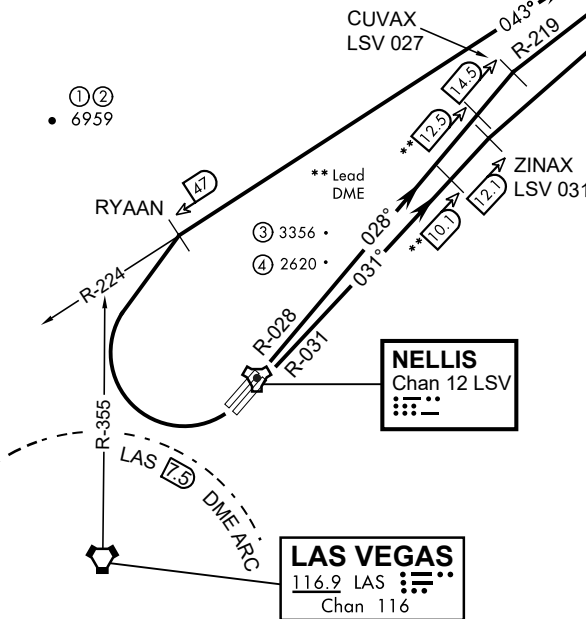


ATIS  
270.100  
NELLIS GROUND  
275.800  
NELLIS TOWER  
327.000  
NELLIS CONTROL  
317.525  
NELLIS DEP/APP EAST  
384.400  
BLACKJACK  
377.800



**MORMON MESA**  
114.3 MMM  
Chan 90  
L-9 H-3

19,000



CAUTION: If unable to comply with restrictions advise ATC prior to departure.

- ① 12.24 NM from Rwy 21R
- ② 12.40 NM from Rwy 21L
- ③ 5.67 NM from Rwy 3L
- ④ 5.85 NM from Rwy 3R

**NELLIS**  
Chan 12 LSV

**LAS VEGAS**  
116.9 LAS  
Chan 116

Rwy	Knots	60	120	180	240	300	360
* 3L	V/V(fpm)	291	582	873	1164	1455	1746
* 3R	V/V(fpm)	258	516	774	1032	1290	1548
* 21L	V/V(fpm)	529	1058	1587	2116	2645	3174
* 21R	V/V(fpm)	536	1072	1680	2144	2680	3216
† 3L/R	V/V(fpm)	359	718	1077	1436	1795	2154

\* Minimum † ATC Climb Rate  
 ① To 3600  
 ② To 3200  
 ③ To 17,000  
 ④ To 13,500  
 ⑤ To 19,000

**DEPARTURE ROUTE DESCRIPTION**

**TAKE-OFF RWY 3L**

• Fly runway heading to intercept the LSV TACAN R-027 then direct CUVAX, intercept the MMM VORTAC R-219 then direct MMM climbing to FL190 or as assigned, then via assigned route.

**TAKE-OFF RWY 3R**

• Fly runway heading to intercept the LSV TACAN R-031 then direct ZINAX, intercept the MMM VORTAC R-217 then direct MMM, climbing to FL190 or as assigned, then via assigned route.

**TAKE-OFF RWY 21L/R**

• Turn right to intercept MMM VORTAC R-224 prior to MMM 47 DME, remain North of the LAS VORTAC 7.5 DME, remain East of LAS R-355, intercept MMM R-224 then direct MMM cross MMM at or above FL190, then via assigned route.

NOISE ABATMENT PROCEDURES: Fly acc. Nellis Noise Abatement instructions

v.01032 NTR NAV CHART